

A clear right-of-way reduces power outages, improves power quality and safety for everyone.



**THANK YOU FOR YOUR  
COOPERATION!**

If you have any questions or concerns  
please call  
1-800-272-6188  
Or  
1-715-267-6188  
Ask to speak to the line department



**\*\*\* TREE \*\*\***  
**\*\* TRIMMING \*\***  
**NOTIFICATION**



Clark Electric Cooperative has contracted with a Professional Tree Trimming contractor to do tree trimming & clearing in your area.

1-800-272-6188  
Or  
1-715-267-6188

## **WHY DOES CLARK ELECTRIC NEED TO TRIM AND CLEAR POWER LINE RIGHT-OF-WAYS?**

### **1. Public Safety.**

Because trees can conduct electricity they can be extremely harmful or even fatal to a person touching a tree or a child that may be climbing in a tree that is touching a power line.

### **2. To provide reliable service.**

When trees and brush come in contact with electric power lines they can cause momentary interruptions in your power or outages that can take hours to restore.

### **3. To protect personal and public property.**

Sparks from trees or brush burning in power lines can cause grass and forest fires that can spread quickly to your home, farm or business, especially under dry, windy conditions.

### **4. To provide crews better access to the distribution system.**

Poorly maintained right-of-ways greatly extend outage times if poles and wires are hard to see and access because of trees and brush in the right-of-way.

# CLARK ELECTRIC COOPERATIVE'S RIGHT-OF-WAY PROGRAM

Every year Clark Electric Cooperative spends hundreds of thousands of dollars clearing and maintaining electric power line right-of-ways. Tree related outages continue to be the number one cause of power interruptions.

Trees in power line right-of-ways must be kept cleared and trimmed back to help provide safe and reliable electric service to our members.

In today's high tech world of electronic equipment the demand for high quality electricity is greater than ever before.

Because of the way the distribution system works a tree that may come in contact with a power line can affect electric service to many members for miles around.

## WHAT IS CLARK ELECTRIC DOING?

Clark Electric Cooperative has an extensive right-of-way program that has tree clearing on a 6-year rotation by substation area. That means we have tree clearing contractors coming to your area once every 6 years. Because tree clearing is so expensive it's very important to clear power line right-of-ways back far enough to maintain safe clearances to last 6 growing seasons.

The contractor that is selected for the project is instructed to clear 15 feet on both sides of the line for single phase lines and 20 feet on both sides of the line for three phase lines. They also will be removing trees or tree branches that hang-over the lines as well as trees and brush growing in the right-of-way. Trees that are dead, dying or lean heavy towards the line are considered to be danger trees and will need to be removed even if they are outside of the right-of-way.

## WHAT CAN YOU DO?

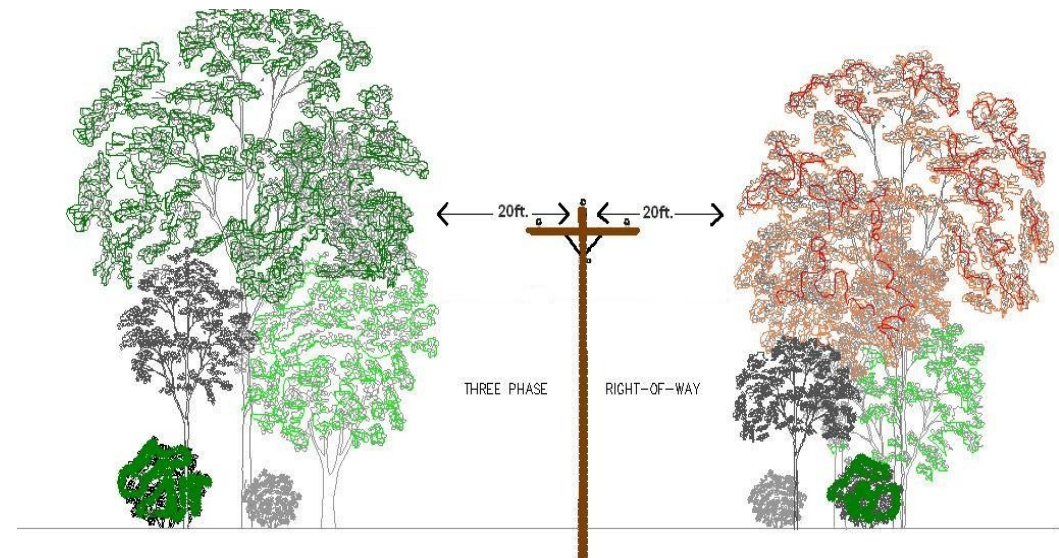
Member's cooperation with trimming and clearing trees in the power line right-of-ways will result in reduced right-of-way maintenance costs in the future, fewer power outages, faster repairs during outages, and a safer more reliable system.

## PLEASE REMEMBER TREE CLEARING BENEFITS ALL MEMBERS.

Clark Electric Cooperative members should know that we understand that members may not always want to have their trees trimmed or cut, but tree clearing is a very important, necessary part of providing safe, reliable, quality service.

**WE NEED THE COOPERATION OF ALL OF OUR MEMBERS TO HELP  
KEEP OUR RIGHT-OF-WAYS CLEAR TO PROVIDE THE KIND OF  
SERVICE OUR MEMBERS EXPECT.**

## EXAMPLE OF A THREE PHASE RIGHT-OF-WAY



**THANK YOU FOR YOUR COOPERATION!**